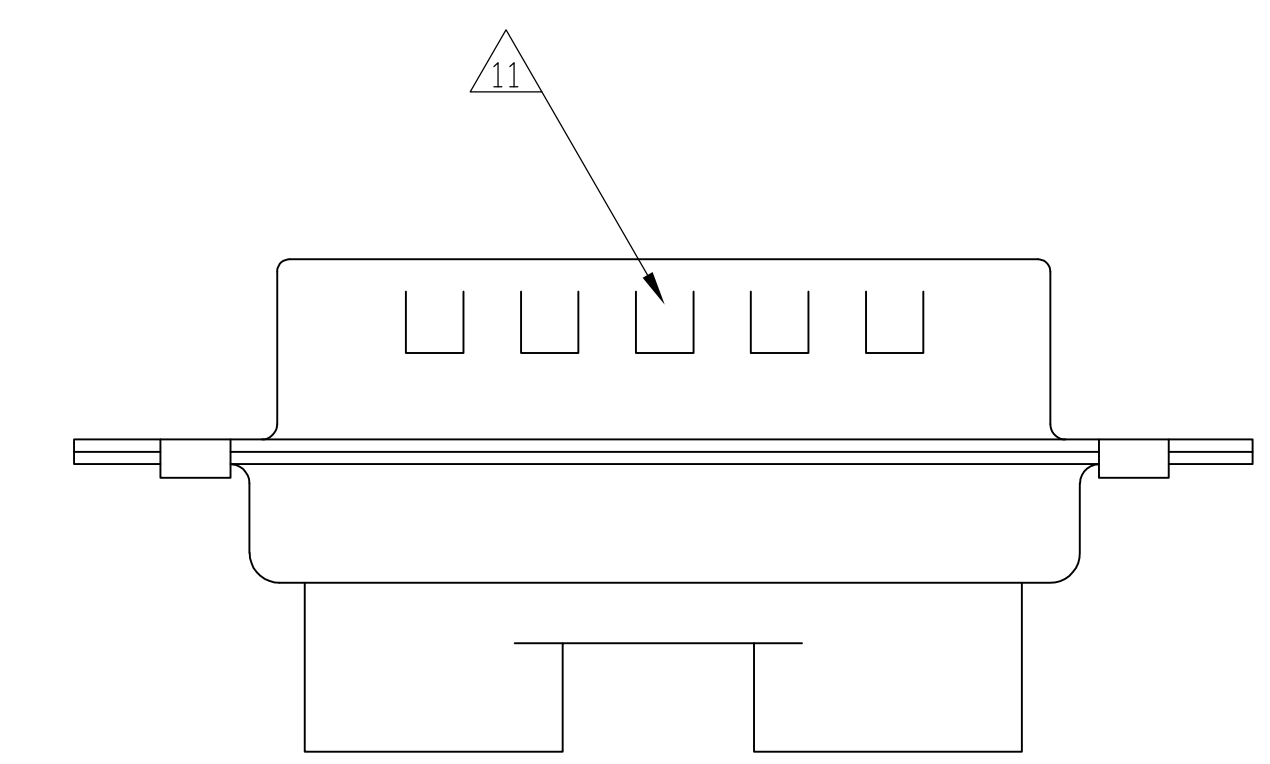
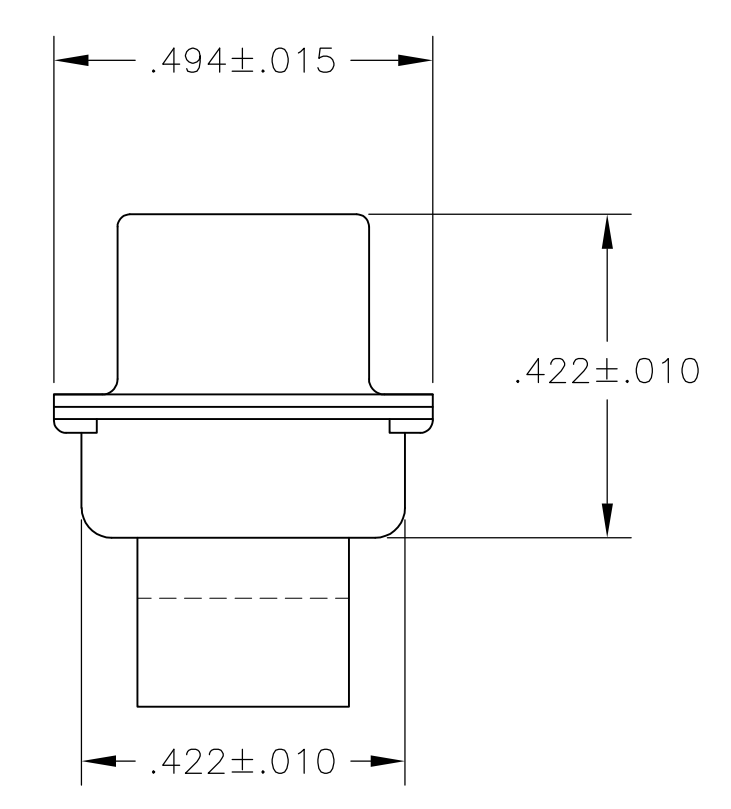
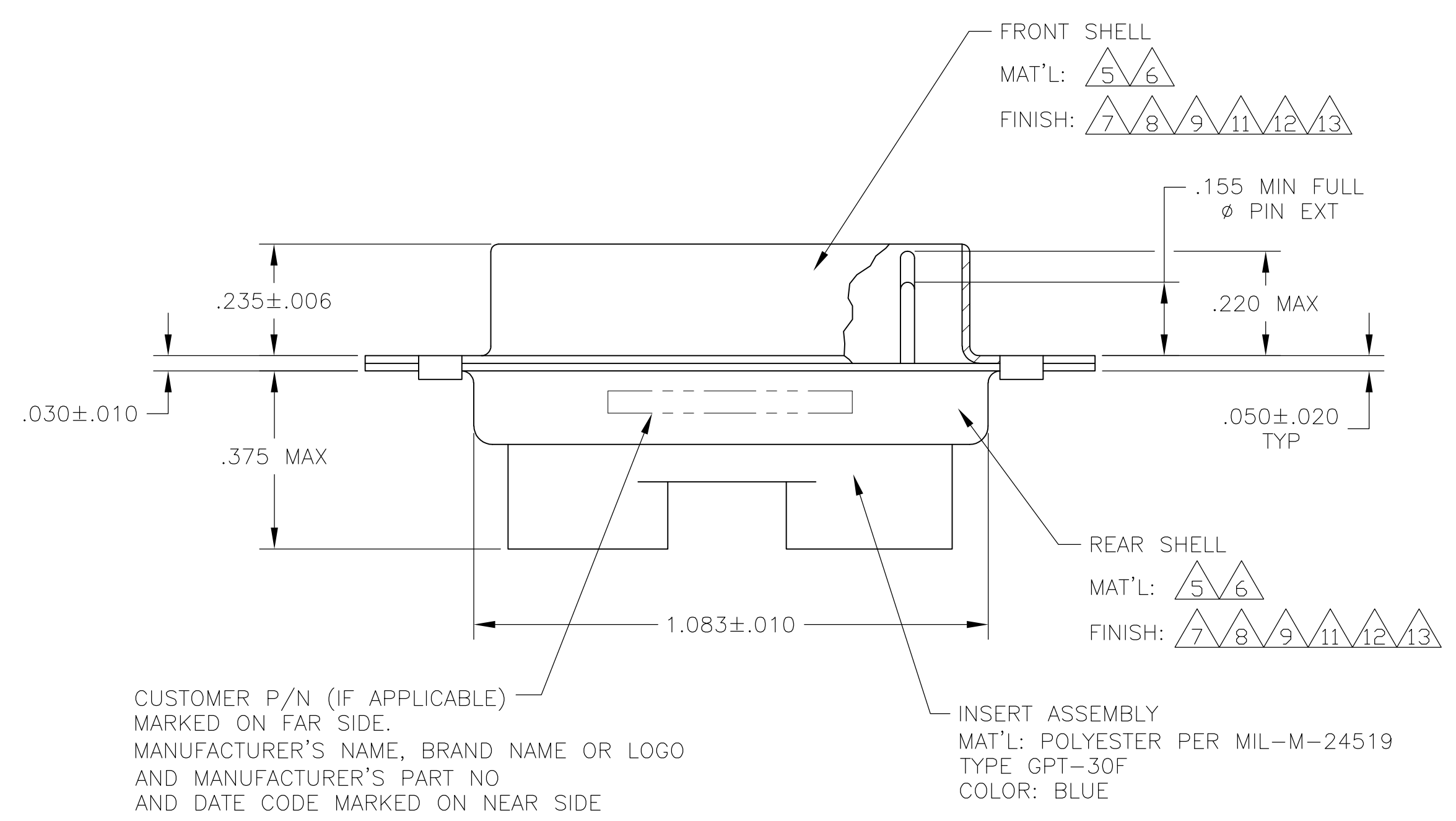
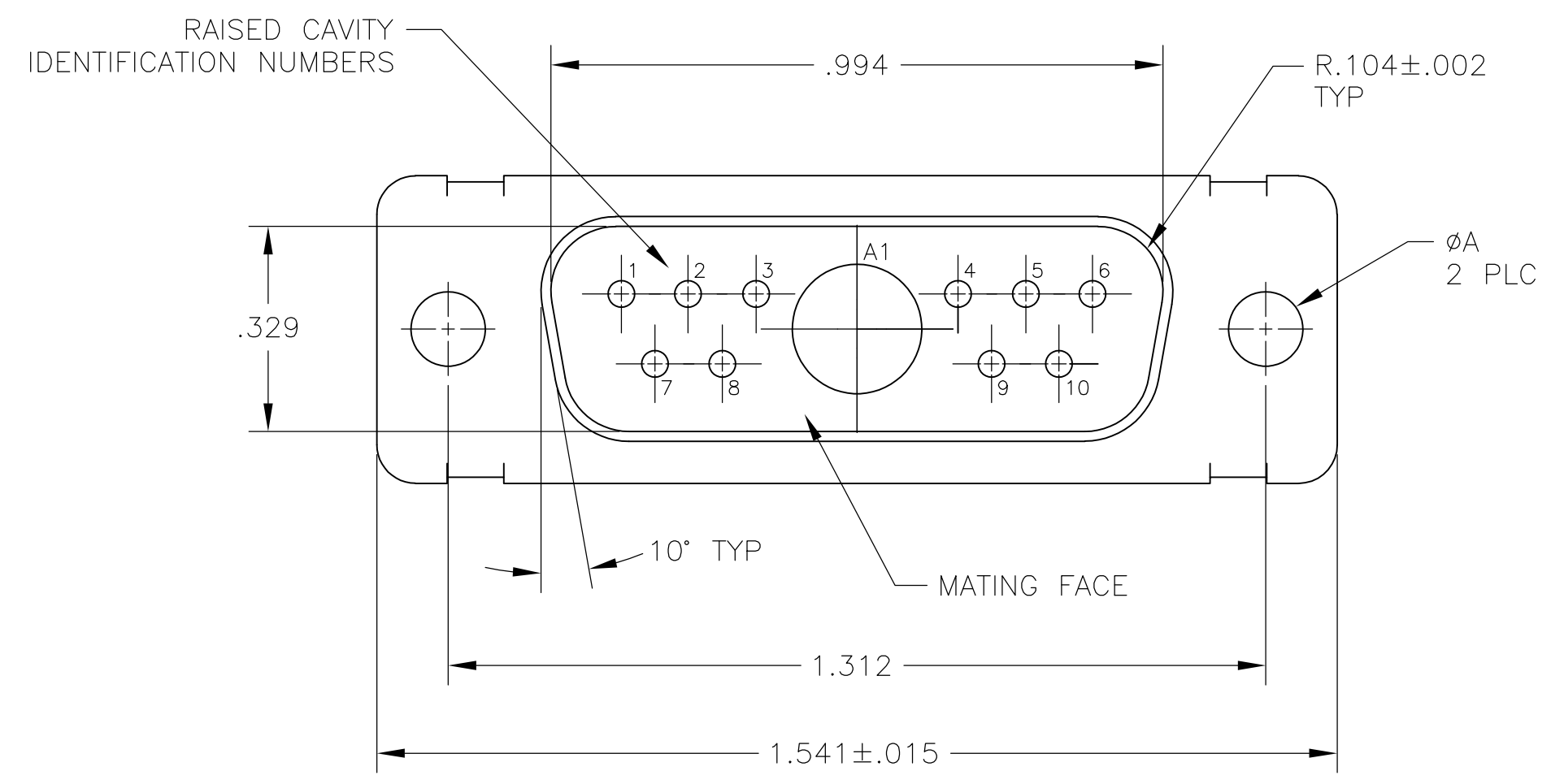


- THIS PLUG WILL MATE WITH ANY 11C1, SIZE 2 RECEPTACLE IN AMPLIMITE SERIES.
- MAXIMUM WIRE INSULATION TO BE USED WITH THIS PLUG IS ϕ .068.
- THIS CONNECTOR ACCEPTS (1) POWER 8, OR COAX PIN CONTACT IN POSITIONS A1, PURCHASED SEPARATELY.
- THIS CONNECTOR ACCEPTS SIZE 20 PIN CONTACTS IN POSITIONS 1 THRU 32. PURCHASED SEPARATELY.
- STEEL PER ASTM-A-109.
- BRASS PER MIL-C-50 AND ASTM-B-36 UNS NO. C26000.
- CADMIUM PLATED PER QQ-P-416.
- GOLD PLATED PER MIL-G-45204 TYPE II, GRADE C, CLASS 1 OVER COPPER PER MIL-C-14550, CLASS IV.
- FINISH: TIN PER ASTM-B-545 .000200 MIN THK OVER COPPER PER AMS2418 .000100-.000200 THK OR TIN-LEAD 93/7 .000200 MIN THK OVER COPPER PER AMS2418 .000100-.000200 THK.
- FRONT SHELL HAS GROUNDING INDENTS FOR 211111-4, 211111-6, & 5-211111-4 ONLY.
- FINISH: BRIGHT TIN PER ASTM-B-545 .000400-.000550 THK OVER COPPER PER AMS2418 .000050 MIN THK.
- FINISH: TIN PER ASTM-B-545 .000200 MIN THK OVER COPPER PER AMS2418 .000100-.000200 THK.
- FINISH: ZINC PLATE PER ASTM-B-633 .000200-.000400 THK WITH SUPPLEMENTARY CHROMATE (Cr3+).



| | | | |
|---------|------|-------------------|-----------|
| 5 10 12 | .120 | - | 5-21111-4 |
| 5 13 | .120 | - | 5-21111-1 |
| 5 11 | .120 | - | 21111-7 |
| 5 10 11 | .120 | - | 21111-6 |
| 6 8 | .120 | B010942-0037 | 21111-5 |
| 5 9 10 | .120 | - | 21111-4 |
| 6 8 | .154 | 311P405-9P-B-15 | 21111-3 |
| 6 8 | .120 | 311P405-9P-B-12 | 21111-2 |
| 5 7 | .120 | - | 21111-1 |
| REMARKS | ØA | CUSTOMER PART NO. | PART NO. |

THIS DRAWING IS A CONTROLLED DOCUMENT. DWN T. SHUEY 09-JAN-88
 CHK A. EMADI 21-JAN-88
 APD A. EMADI 21-JAN-88

Tyco Electronics Corporation
 Harrisburg, Pa 17105-3608

PLUG ASSEMBLY
 AMPLIMITE 11C1
 SIZE 2, SERIES 109, COAX MIX

SIZE: A1 CAGE CODE: 00779 DRAWING NO: 211111
 WEIGHT: -

CUSTOMER DRAWING SCALE: 4:1 SHEET: 1 OF 1 REV: V

| DIMENSIONS INCHES | TOLERANCES UNLESS OTHERWISE SPECIFIED: |
|-------------------|--|
| 0 PLC | ± - |
| 1 PLC | ± - |
| 2 PLC | ± - |
| 3 PLC | ± .005(0.13) |
| 4 PLC | ± - |
| ANGLES | ± 0'30" |
| FINISH | - |